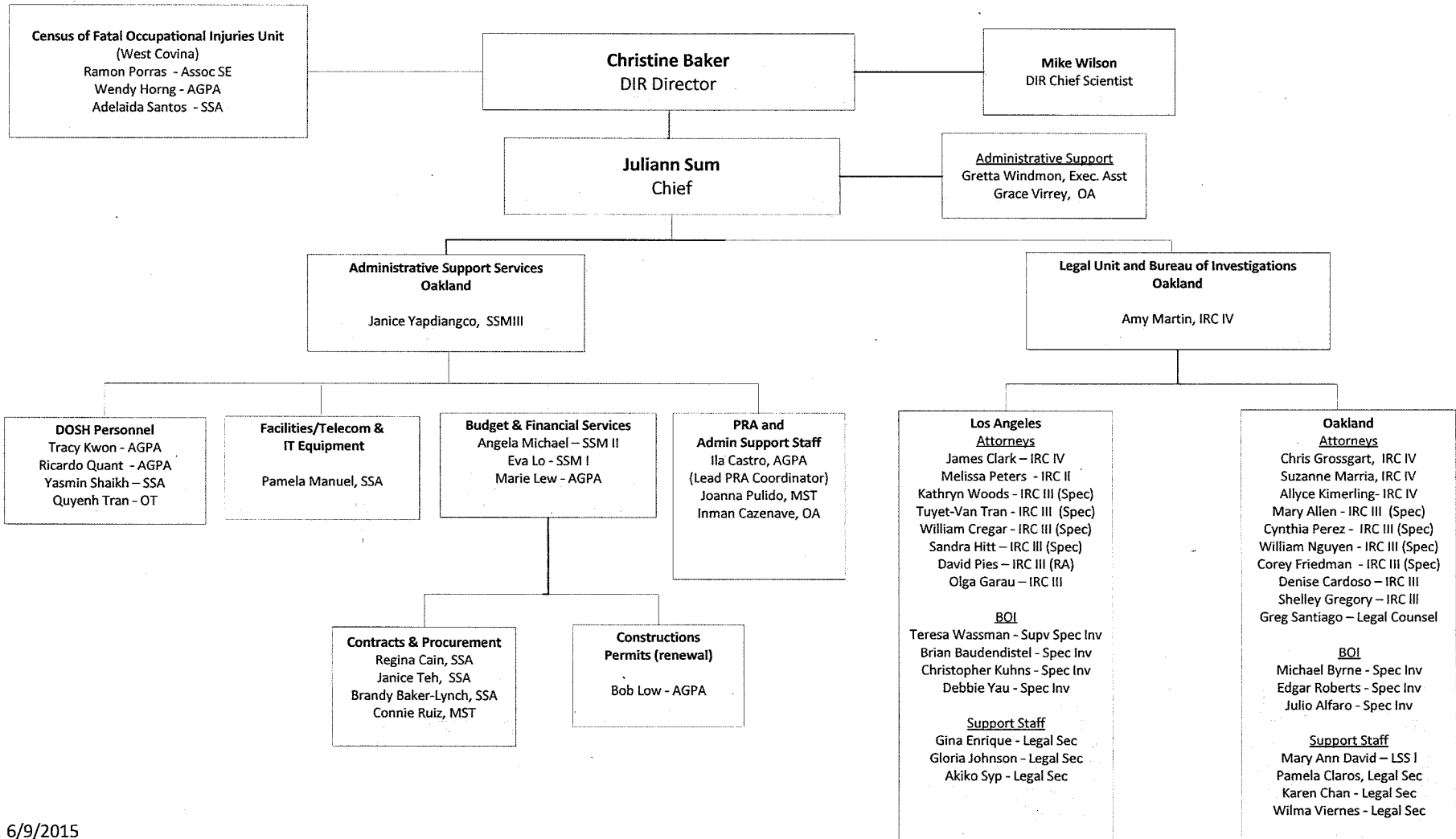
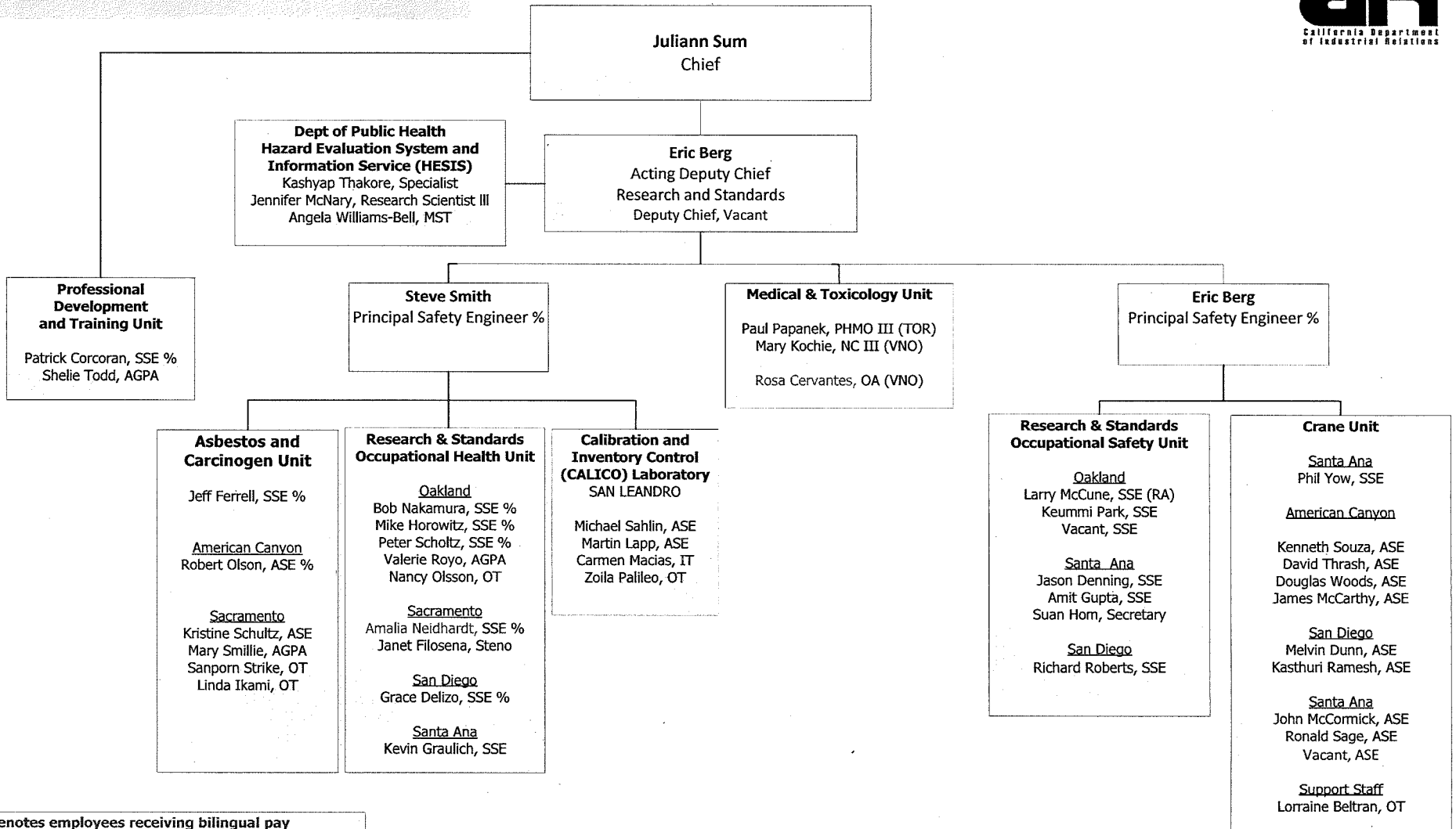


**DIVISION OF OCCUPATIONAL SAFETY AND HEALTH
ADMINISTRATION/LEGAL-BOI**

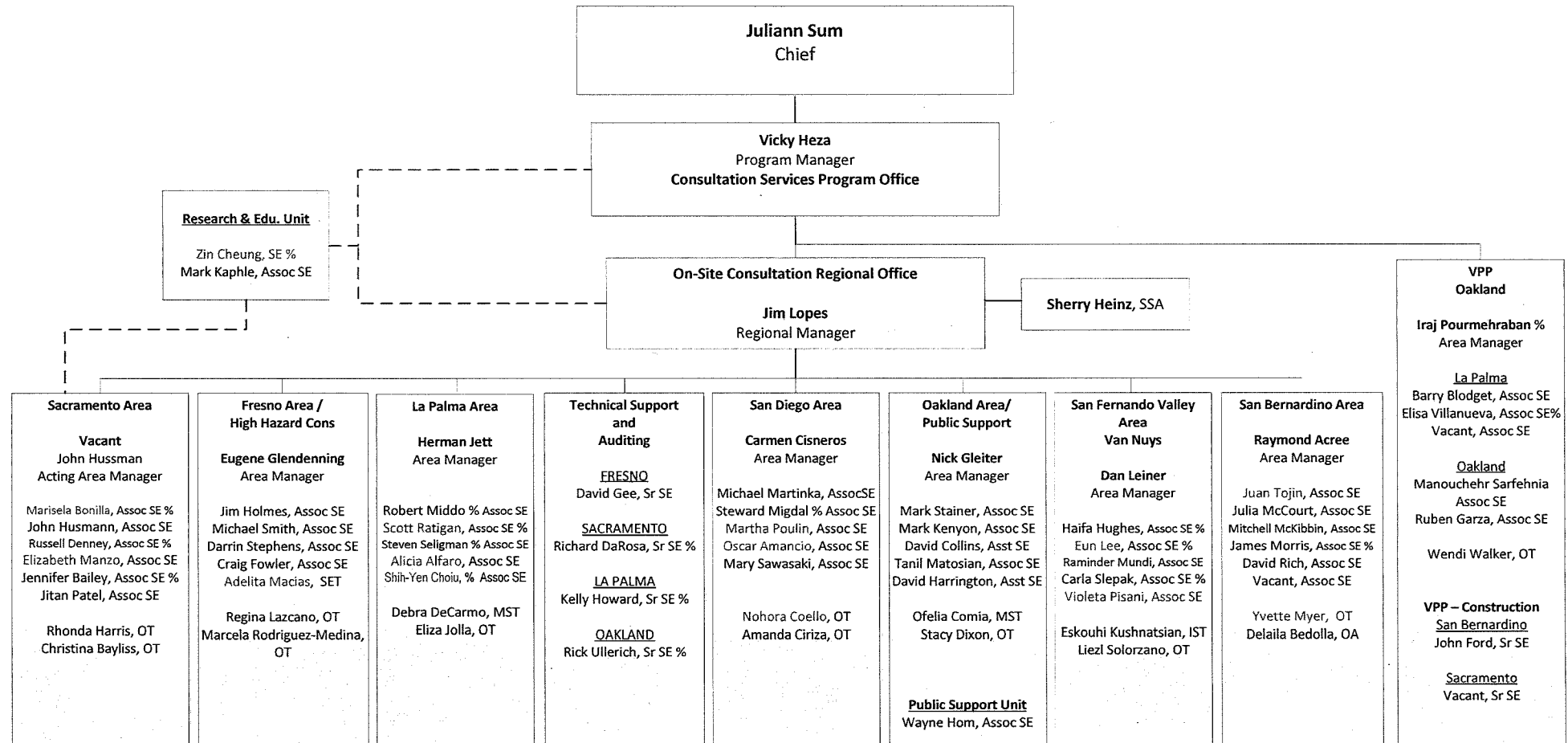


**Division of Occupational Safety and Health
Health, Safety, Medical and Training**



Red font denotes employees receiving bilingual pay
% = formerly IH

**Division of Occupational Safety and Health
Consultation Services Branch**

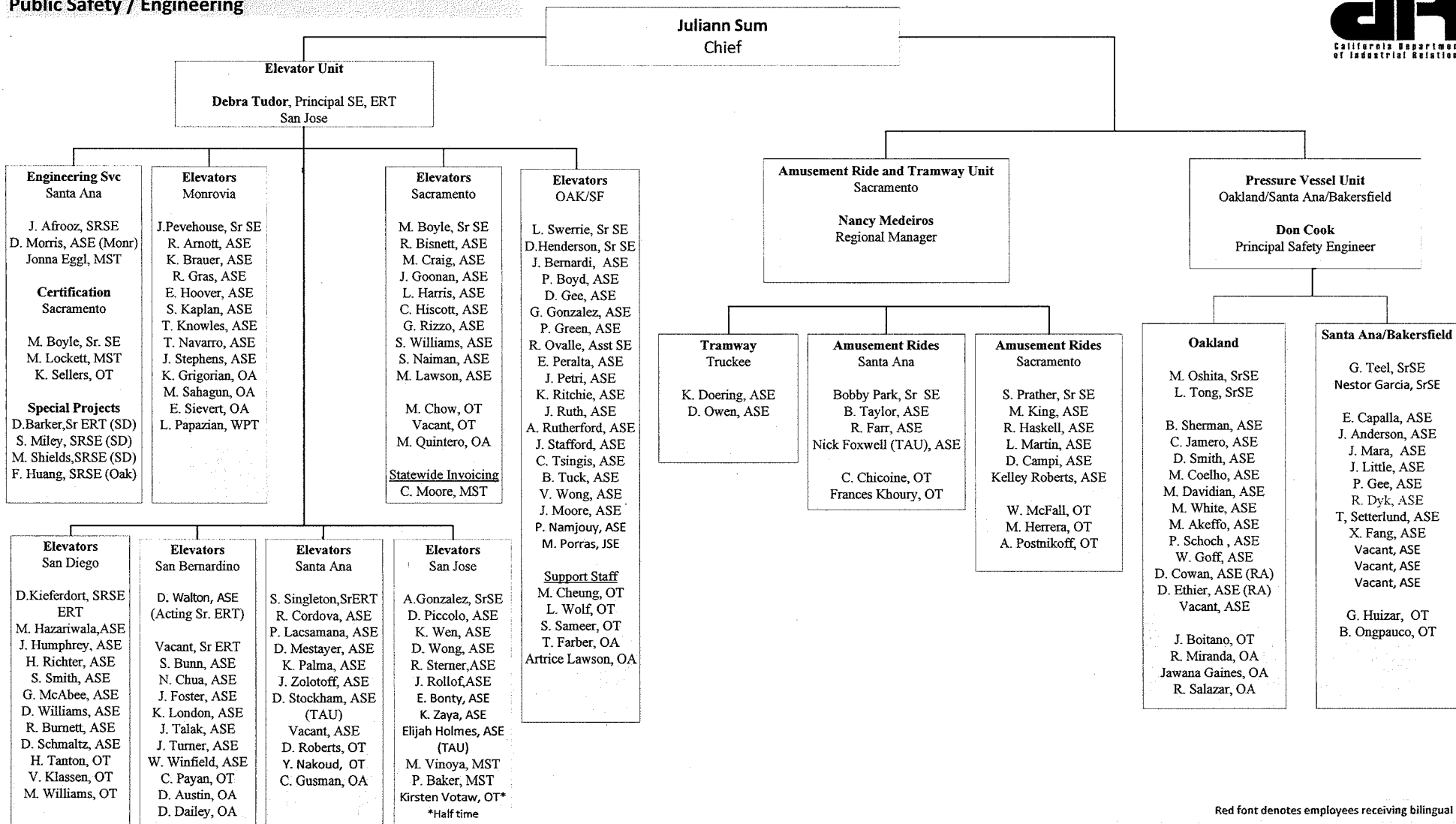


Red font denotes employees receiving bilingual pay

% = formerly IH

Revised 6/9/2015

**Division of Occupational Safety and Health
Public Safety / Engineering**



Red font denotes employees receiving bilingual pay

Revised 6/16/2015